



# ScanNCut Project: Rockin' T-Shirt

You're creative. You've got great ideas. Turn a simple T-shirt into a canvas of personal expression with the ScanNCut. Let your inner fashion designer loose with this fun and easy project!

## MATERIALS:

- Brother ScanNCut machine
- Fabric
- T-shirt
- Iron-on fabric appliqué contact sheet

## Step 1

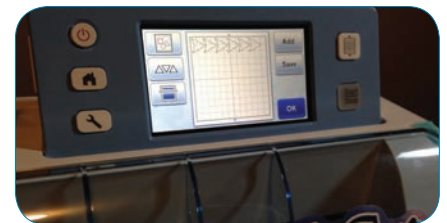
Find a T-shirt, tank, maxi dress, etc., of your choice.



We chose this fashionable grey T.

## Step 2

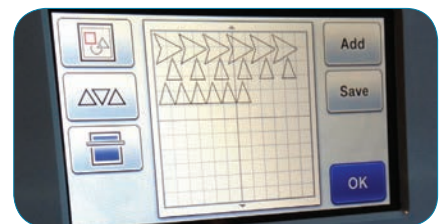
Choose a **medium-sized shape** (we chose triangles). Adjust the size according to the proportions of your garment. Select an even number to duplicate as many as you like. The more shapes you have, the more options you'll have to create a great mosaic pattern.



We're going to take these triangles to the next level!

## Step 3

Choose a **small-sized shape**. Adjust the size to the proportions of your garment. Select an even number to duplicate that is more than what you selected for the medium shapes. With these smaller pieces, you can add more detail to your design.



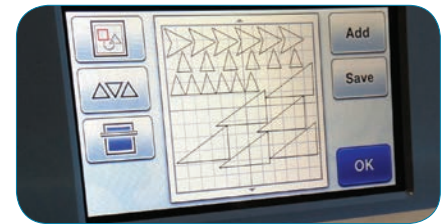
Adding small shapes for detail.



# ScanNCut Project: Rockin' T-Shirt

## Step 4

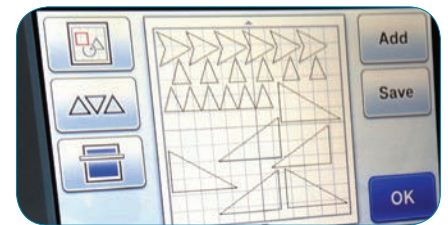
Choose a **large-sized shape**. Once again, adjust the size to the proportions of your garment. Select an even number to duplicate that is less than what you selected for the medium shapes. These will serve as anchors and focal points in your design, so you don't need as many.



Add a few larger shapes as anchors to your design.

## Step 5

If you've chosen any asymmetrical pieces, you'll need to mirror half of the number that you selected for each size. This will allow you to create a mirrored, symmetrical design on your garment.



Mirroring shapes for a symmetrical design.

## Step 6

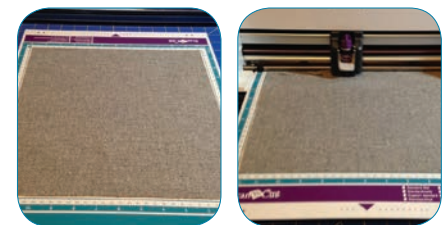
With a fabric of your choice, cut a square to fit the entire size of the mat.



We went for grey on grey.

## Step 7

Place your fabric onto the standard mat firmly. Feed it into the machine.



Getting ready to cut.



# ScanNCut Project: Rockin' T-Shirt

## Step 8

Select "Cut" and let your ScanNCut do its magic!  
Remove the mat from the machine carefully so you don't pull any pieces from your fabric.



Be careful when removing the mat.

## Step 9

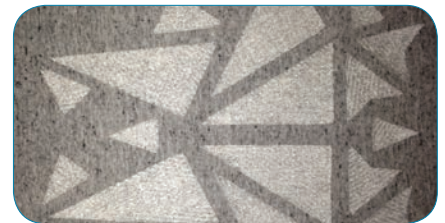
Peel away all cut pieces.



Perfect triangles for a perfect design.

## Step 10

Now the fun begins! Create a pattern on your garment. Peel away the backing from each shape and iron onto your garment.



Release your inner artist.

## Step 11

Voilà! Your T-shirt is now complete and ready for you to rock!



Amazing, one of kind T-shirt,  
designed exclusively by you.